

HOW TO RECORD A CONFIGURATION ON DAS240

We are going to see how to record a configuration in the device intern memory

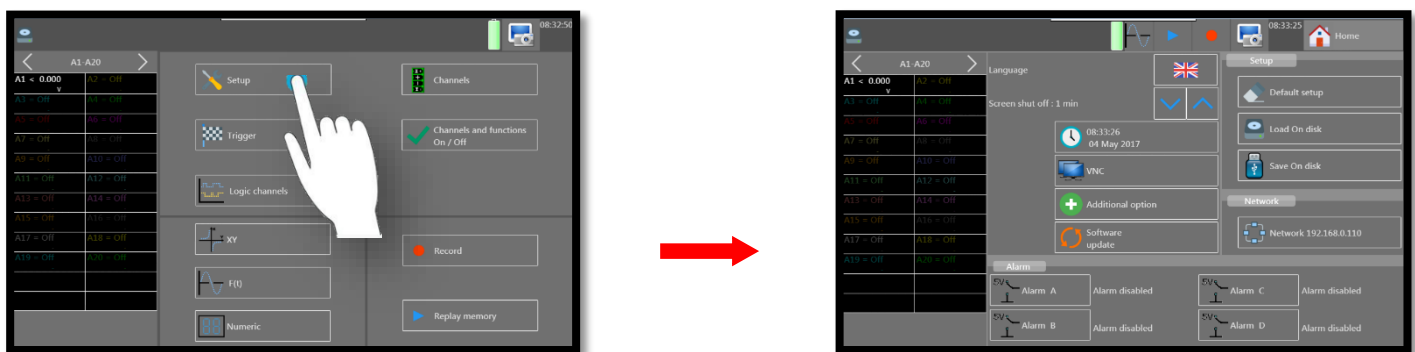
I: Requisites

Must have setup the channels you want to record.

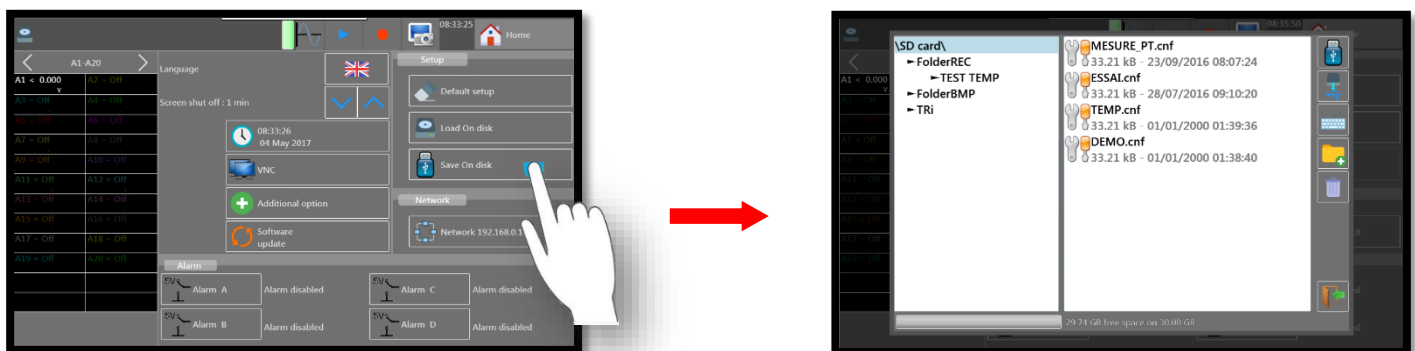
To record a channel, refer to **NA_ENR_DAS240_CONF_VOIE**.

II : Record a configuration

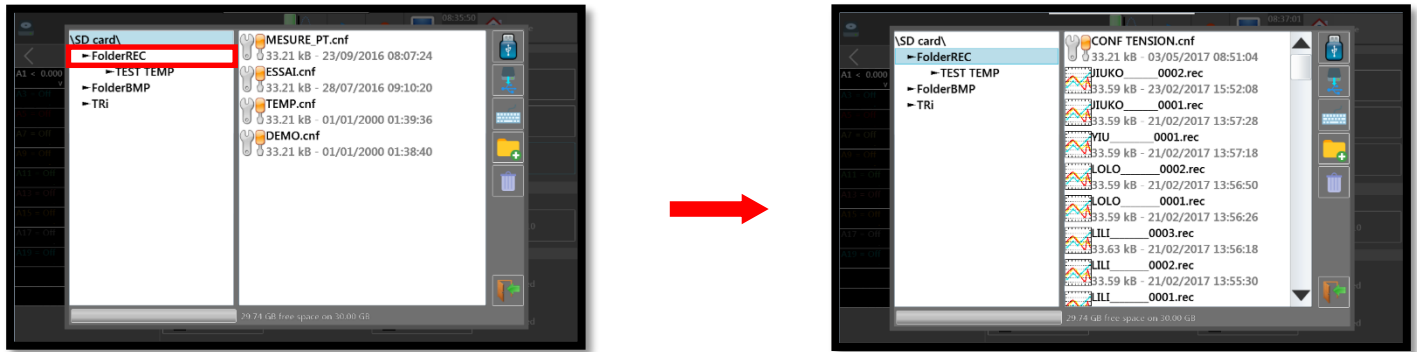
1- Access to "Setup" menu by pressing on the corresponding button:



2- Access to the intern memory of the device by pressing on the button "Save on disk":



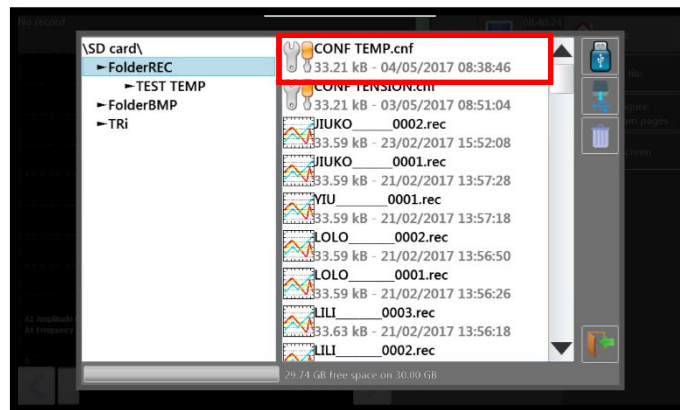
3- Choose the folder in which you want to record the configuration, in this case we choose "FolderREC":



4- You can choose the name of your file. In this case we choose "CONF TEMP":



5- Press on the button "Validate" to record your file:



SEFRAM INSTRUMENTS SAS - 32, rue E. Martel – BP55 - F42009 – Saint-Etienne Cedex 2 France

Tel: +33 (0)4 77 59 01 01 Fax : +33 (0)4 77 57 23 23

SAS au capital de 1 650 000 euros – RCS Saint-Etienne 790 833 404/ APE: 2651B / SIRET : 790 833 404 00011

TVA Intracommunautaire: FR 19790833404